

**CHALLENGER**

**LMS**

SPECIALIST MANUFACTURERS OF  
WASTE HANDLING MACHINERY



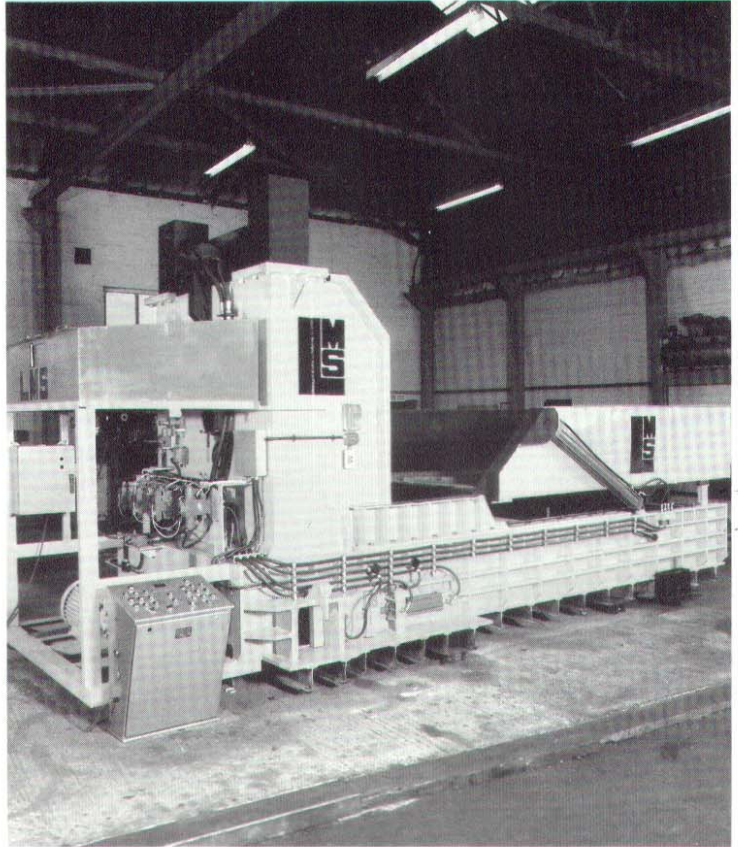
This has proved to be an ideal machine for small to medium sized scrap yards where there is a need for an inexpensive and simple baler capable of handling all types of ferrous and non-ferrous bulky scrap. Materials such as Car Shells, Cookers, Fridges, Washing Machines, Factory Cuttings, Aluminium etc. are ideal for this machine.

## **STATIC SHEAR BALER**



## SPECIFICATIONS

**Power:** 40 hp  
**Automatic cycle time:** 60 seconds  
**Length:** Base 5.62 m (18'6")  
Overall length 7.83 m (25'9")  
**Width:** 2.13 m (7') to 2.84 m (9'4")  
plus cylinder 5.3 m (17'5")  
**Height:** 3.34 m (11') - with hopper  
raised 4.87 m (15'9")  
**Charging Box:** 1.27 m x 1.83 m x 0.6 m  
(4'3" x 6' x 24")  
**Weight:** Approximately 20 tons.  
**Bale Size:** 30 cm x 30 cm x variable  
(12" x 12" x variable)  
**Shearing Force:** 105 tons.  
**Machine Price:** On application  
(Possible reconditioned machines available)



## POINTS OF INTEREST

Automatic and Manual Push-button cycles.

Electric or Diesel power units.

Emergency stop buttons on the Baler, Control Console and Power Unit.

The Baler is free standing and needs only a firm flat base of a minimum size of 20 ft x 10 ft.

The machine can be working within hours of arrival.

All Wear Plates and Shear Blades are changeable if and when required.

Operation of the Hopper is independent of the baling action so that it is possible to achieve continuous operation.

### Operation of the machine:-

E.g. Car Shells

It can take complete Car Shells.

The shells do not have to be cut up first.

When the loaded Hopper is raised to the vertical position the car shell drops in stages into the charging box. Each time the main ram retracts, the shell drops 24". As the ram advances it shears off the 24" and the baling cycle begins.

A standard car of about 12 ft. length makes 6 bales.

6 months Warranty on parts & labour.

Full back-up service available for parts, services etc.