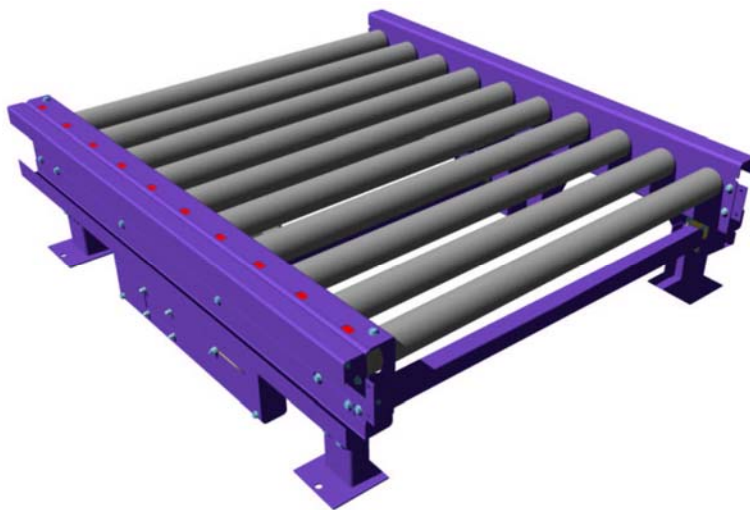


Roller Pallet Conveyor System



A robust roller pallet conveyor system. Rollers are driven tangentially by 5/8" chain in a fully enclosed side channel. The system offers minimal backlash, easy tensioning and a 150mm roller pitch. With a load capacity of 1500kg per pallet the straight modules are available to handle up to 4500kg total conveyor load.

- **Tangential chain drive**
- **Option of steel or polymer sprockets on rollers**
- **4 – mm thick side channels**
- **3 and 5mm thick roller options**
- **Chain tensioning without removing guards**
- **150mm roller pitch**
- **Cables can be run in non drive channels. Facia to close off section.**
- **Ability to fit photocells using clamp brackets**

Heights

Range of heights available from 375 - 925mm (Top of Chain)

Motor

0.75, 1.1, 1.5, 2.2, and 3.0 kW available

Motor Types

- No Brake - No Inverter
- No Brake - Soft Start
- No Brake - Inverter
- No Brake - Soft Start Reversing
- Braked - No Inverter
- Braked - Soft Start
- Braked - Inverter
- Braked - Soft Start Reversing

Chain

3/4" pitch simplex chain

Lengths Available

1300, 1500, 2050, 2450, 3000 and 3600mm

Pallets

1200mm L-R

Speeds

12m/min and 18m/min available

Electrical Power

Motors should be connected to 400/415V 3-phase, 50Hz supply.

12m/min	Motor Power (kW)	Full Load Current(A)
	0.75	2.0
	1.5	4.2
2.2	5.9	
18m/min	Motor Power (kW)	Full Load Current(A)
	1.1	3.2
	2.2	5.9
	3.0	7.2

